

# CHARLES PARSONS

Textiles

Est. 1915

## Woven Fuse R20 Parlan

**DESCRIPTION** Weft insert fusible interlining

**APPLICATION** Ideal interlining for jacket, coat fronts and facings on woven fabrics. Adds volume and support for a soft hand feel.

**COLOURS** Black and Natural

**WEIGHT** 85 gsm

**WIDTH** 152cm

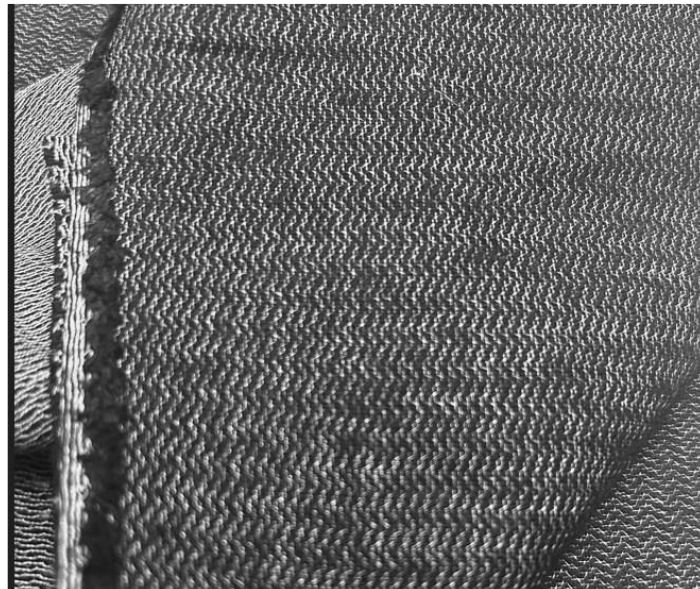
**ROLL LENGTH** 50m per roll.

**COMPOSITION** 68% Viscose 32% Polyester

**COATING** Polyamide

**FUSING CONDITIONS** Dial Temp: 140 – 150 degrees Celsius  
Glueline Temp: 130 – 140 degrees Celsius  
Pressure: 30 - 35 N/cm 2 - 3 Bar

**CARE INSTRUCTIONS** Dry cleanable



The information contained in this performance specification sheet is subject to change without notice and remains the property of Charles Parsons and Co. It shall not be reproduced in whole or part, nor provided to any third parties without the written authorisation of Charles Parsons and Co. Charles Parsons and Co makes no warranty of any kind with regard to this technical specification, including but not limited to, the implied warranties of merchantability and fitness for a particular purpose. Charles Parsons and Co shall not be liable for incidental or consequential damages in connection with the supply, performance or use of this fabric. The previous conditions are only a guide.  
A preliminary trial is recommended before using the product in production